



CRISTEC

l'énergie embarquée

OPTIONS FOR CPS2 BATTERY CHARGERS

- **REMOTE BOOST CONTROL** Page 1

- **ANALOGUE AMMETER AND VOLTMETER** Page 2

- **CABLE FOR ANALOGUE METERS (voltmeter and ammeter)** Page 4

- **NIGHT FUNCTION (switch fan off)** Page 5

- **STAND-ALONE LED : BOOST, ABSORPTION, FLOATING** Page 6

- **REMOTE OFF/ON CONTROL** Page 7

- **TEMPERATURE PROBE** Page 8

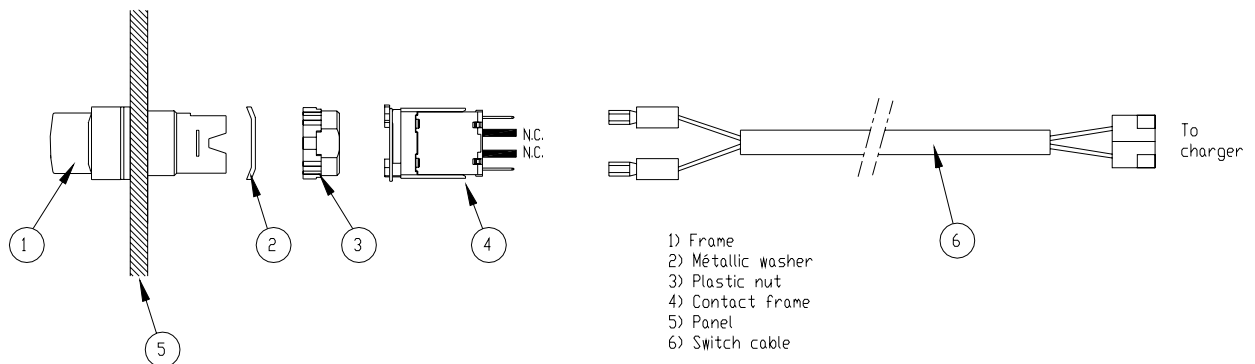
CPS2 CHARGER REMOTE BOOST CONTROL

REFERENCE: BAD-CPS2 (SEEL008768)

1/ OVERVIEW

- This option allows to activate the charger boost function at a distance.
- This option is fitted with a dual position switch, a 5-metre cable with a 2 points connector, OFF/ON label, 2 collars and 2 self-adhesive bases.
- This document is intended for users, installers and equipment maintenance staff. Please read this document and CPS2 battery charger user manual carefully before working on the material.

2/ OPERATING



- Disconnect the charger from the AC power network and disconnect the batteries.
- Bore a 16.2mm diameter hole in the panel which will receive the remote.
- Fit item n°1 into the allowed hole.
- Put the washer n°2 and tighten with plastic nut n°3.
- Clips the n°4 contact frame that is already cabled (do not force, it can only be clipped in one way).
- Connect the end of cable on K11 charger connector.
- Place OFF/ON label on the panel above the remote.
- Charger switch SW1 (boost).on position OFF.

3) COMMISSIONING

Check if everything is well connected, and connect the charger on the batteries and AC power network.

- OFF position ; on the left, BOOST is not activated.
- ON position ; on the right, BOOST is activated.

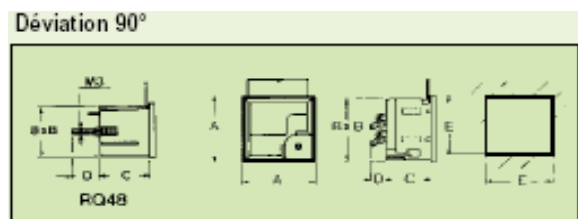
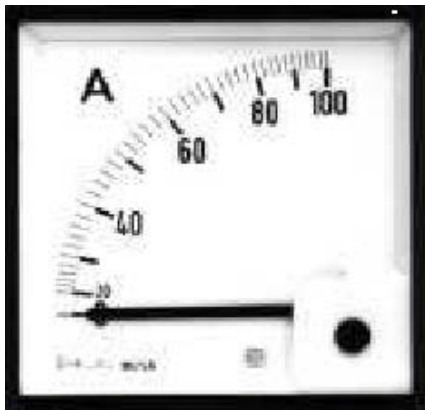
4) PRECAUTIONS

- Material and cables have to be prevented from any mechanical deterioration and liquids.
- For the well functioning of the option and the charger, please respect the proceedings above described.
- The option must be only used with CPS2 battery chargers.
- Attention : any failure to comply with the rules for installation and operation, or any modification of the original material could deteriorate the battery charger, and therefore cancel the manufacturer's warranty.

ANALOGUE AMMETER AND VOLTMETER FOR CPS2 CHARGERS

AMMETER :

This option enables to view the charger's total current. It must be connected with the option DEP-V-A-CPS2.



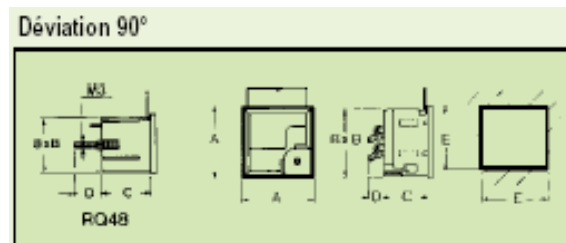
TYPE	A	B	C	D	E	Middle-weight
RQ48M	48x48cm	44,5x44,5cm	40cm	22cm	45cm	100 g

REFERENCE: Depends on the model. See here after :

Model	Reference
CPS2/12-16	AMP 12V/16A CPS2
CPS2/12-25	AMP 12V/25A CPS2
CPS2/12-40	AMP 12V/40A CPS2
CPS2/12-60	AMP 12V/60A CPS2
CPS2/12-80	AMP 12V/80A CPS2
CPS2/24-08	AMP 24V/08A CPS2
CPS2/24-12	AMP 24V/12A CPS2
CPS2/24-20	AMP 24V/20A CPS2
CPS2/24-30	AMP 24V/30A CPS2
CPS2/48-15	AMP 48V/15A CPS2
CPS2/24-50	AMP 24V/50A CPS2
CPS2/24-60	AMP 24V/60A CPS2
CPS2/24-75	AMP 24V/75A CPS2
CPS2/48-30	AMP 48V/30A CPS2

VOLTMETER :

This option enables to view the voltage of a particular output or the charger's voltage upstream of the distributor. It must be connected with the option DEP-V-A-CPS2.



TYPE	A	B	C	D	E	Middle-weight
RQ48M	48x48cm	44,5x44,5cm	40cm	22cm	45cm	100 g

REFERENCE: Depends on the model. See here after :

Model	Reference
For 12Vcc chargers	VLT0012-CPS2
For 24Vcc chargers	VLT0024-CPS2
For 48Vcc chargers	VLT0048-CPS2

CABLE FOR ANALOGUE METERS (VOLTMETER OR AMMETER) FOR CPS2 CHARGERS

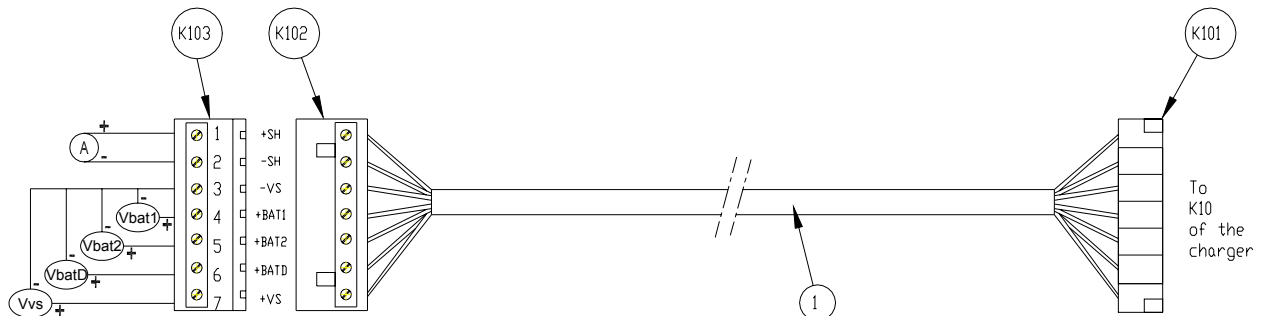
REFERENCE: DEP-V-A-CPS2 (SEEL008772)

1/ OVERVIEW

- This option allows to connect analogue display units (voltmeter, ammeter) to CPS2 chargers, as a stand alone option.
- This option is fitted with a 5-metre cable with two 7-point connectors at each end, a 7-point connector for connection, 2 collars and 2 self-adhesive bases.
- This document is intended for users, installers and equipment maintenance staff. Please read this document and CPS2 battery charger user manual carefully before working on the material.
- The analogue displays units can only be supplied by CRISTEC (please refer to the CPS2 user manual)

2/ OPERATING

- Disconnect the charger from the AC power network and disconnect the batteries.
- Connect the required analogue display units on K103 connector (please refer to diagram) (cables between analogue display units and K103 connector, not supplied)
- Connect K103 connector on K102 connector (please refer to diagram)
- Connect K101 cable connector on K10 charger connector (please refer to diagram).
- Check if everything is well connected, and connect the charger on the batteries and AC power network.



- | | |
|-------|---|
| A | Total charger current display |
| Vbat1 | BAT1 output voltage display |
| Vbat2 | BAT2 output voltage display |
| VbatD | BATD output voltage display |
| Vvs | Display of the voltage before distributor |

3/ PRECAUTIONS

- Material and cables have to be prevented from any mechanical deterioration and liquids.
- For the well functioning of the option and the charger, please respect the proceedings above described.
- The analogue display units must be used with CPS2 battery chargers.
- Any failure to comply with the rules for installation and operation, or any modification of the original material could deteriorate the battery charger, and therefore cancel the manufacturer's warranty.

CPS2 CHARGER NIGHT FUNCTION (SWITCH FAN OFF)

REFERENCE: AR-VENT-CPS2 (SEEL008770)

1/ OVERVIEW

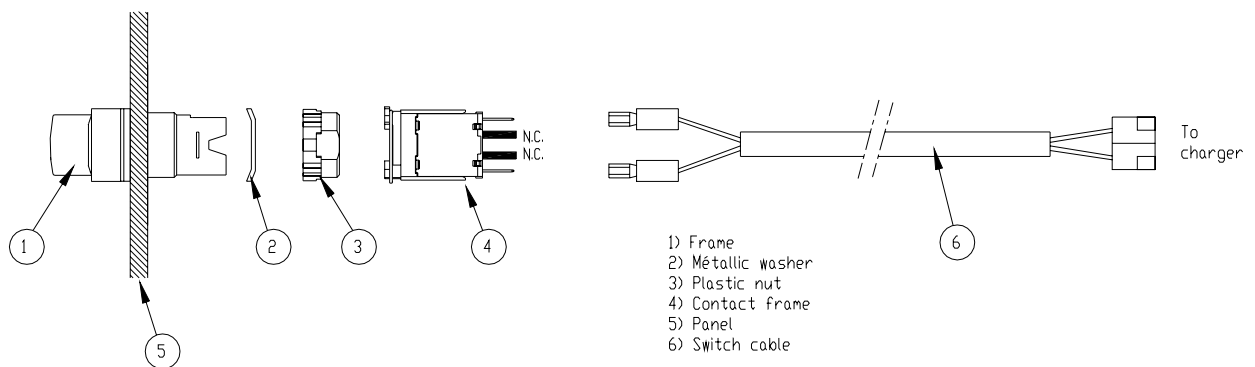
-This option allows to activate at a distance the charger night function (switch fan off).

-Beware : use of this function automatically reduces the output power to allow the fan to be turned off. It should not be used permanently, otherwise the batteries run the risk of running down and charger operation may be prematurely affected.

-This option is fitted with a dual position switch, a 5-metre cable with a 2 points connector, OFF/ON label, 2 collars and 2 self-adhesive bases.

-This document is intended for users, installers and equipment maintenance staff. Please read this document and CPS2 battery charger user manual carefully before working on the material.

2/ OPERATING



- Disconnect the charger from the AC power network and disconnect the batteries.
- Bore a 16.2mm diameter hole in the panel which will receive the remote control.
- Fit item n°1 into the allowed hole.
- Put the washer n°2 and tighten with plastic nut n°3.
- Clips the n°4 contact frame that is already cabled (do not force it can only be clipped in one way).
- Connector the end of cable on K9 charger connector.
- Place OFF/ON label on the panel above the remote.

3) COMMISSIONING

Check if everything is well connected, and connect the charger on the batteries and AC power network.

- OFF position ; on the left, charger is off.
- ON position ; on the right, charger is on.

4) PRECAUTIONS

-Material and cables have to be prevented from any mechanical deterioration and liquids.

-For the well functioning of the option and the charger, please respect the proceedings above described.

-The « night function » option must be only used with CPS2 battery chargers.

-Beware : any failure to comply with the rules for installation and operation, or any modification of the original material could deteriorate the battery charger, and therefore cancel the manufacturer's warranty.

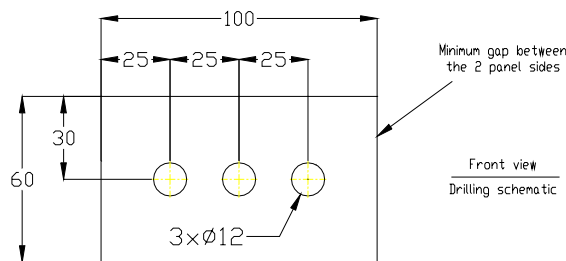
STAND-ALONE LED FOR CPS2 CHARGER: BOOST, ABSORPTION, FLOATING

REFERENCE: LED-DEP-CPS2 (SEEL008774)

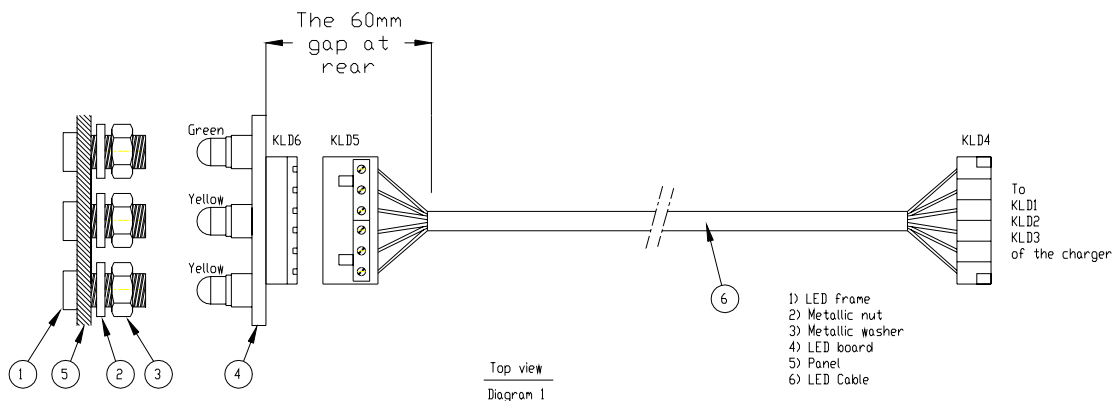
1/ OVERVIEW

- This option allows to have, at a distance, the 3 front charger LED: Boost, Absorption, Floating.
- This option is fitted with a LED board, 3 LED frame (with nuts and washers) a 5-metre cable with two 6 point connectors, “ON, Boost/Absorption, Floating” label, 2 collars and 2 self-adhesive bases.
- This document is intended for users, installers and equipment maintenance staff. Please read this document and CPS2 battery charger user manual carefully before working on the material.

2/ OPERATING



- Disconnect the charger from the AC power network and disconnect the batteries.
- Bore three 12mm diameter holes in the panel which will receive the remote (refer to drilling schematic)
- Fit the three LED frames n°1 in the allowed holes.
- Put washers n°2 and tighten with nuts n°3 (refer to diagram n°1).
- Connect KLD5 cable connector on KLD1/KLD2/KLD3 charger connectors
- Connect the end of cable on K8 charger connector.
- Place “ON, Boost/Absorption, Floating” label on the panel above the LEDs.



3/ PRECAUTIONS

- Material and cables have to be prevented from any mechanical deterioration and liquids.
- For the well functioning of the option and the charger, please respect the proceedings above described.
- This option must be used with CPS2 battery chargers.
- Beware: any failure to comply with the rules for installation and operation, or any modification of the original material could deteriorate the battery charger, and therefore cancel the manufacturer's warranty.

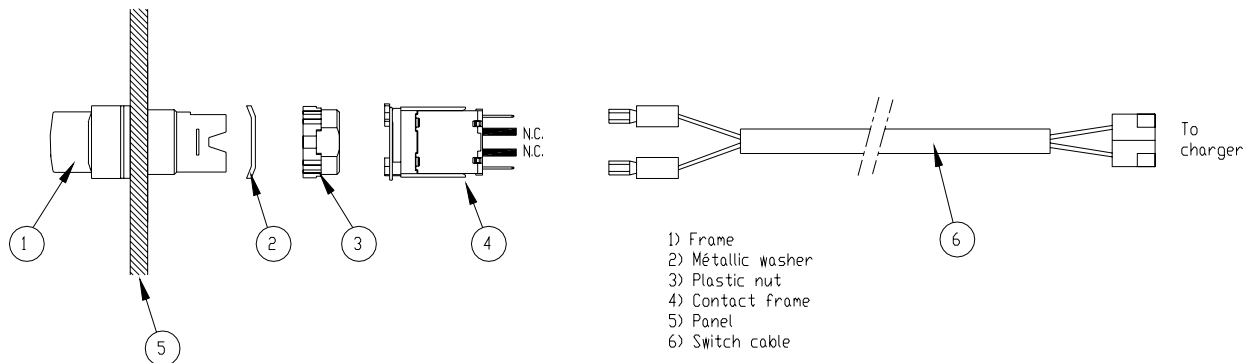
CPS2 CHARGER REMOTE OFF/ON CONTROL

REFERENCE: A/M – CPS2 (SEEL008766)

1/ OVERVIEW

- This option allows to start and stop the charger at a distance
- This option is fitted with a dual position switch, a 5-metre cable with a 2 points connector, OFF/ON label, 2 collars and 2 self-adhesive bases.
- This document is intended for users, installers and equipment maintenance staff. Please read this document and CPS2 battery charger user manual carefully before working on the material.

2/ OPERATING



- Disconnect the charger from the AC power network and disconnect the batteries.
- Bore a 16.2mm diameter hole in the panel which will receive the remote
- Fit item n°1 into the allowed hole
- Put the washer n°2 and tighten with plastic nut n°3.
- Clips the n°4 contact frame that is already cabled (do not force, it can only be clipped in one way)
- Connect the end of cable on K8 charger connector.
- Place ON/OFF label on the panel above the remote.

3) COMMISSIONING

Check if everything is well connected, and connect the charger on the batteries and AC power network.

- OFF position ; on the left, charger is off.
- ON position ; on the right, charger is on.

4) PRECAUTIONS

- Material and cables have to be prevented from any mechanical deterioration and liquids.
- For the well functioning of the option and the charger, please respect the proceedings above described.
- The remote ON/OFF control must be used with CPS2 battery chargers.
- Any failure to comply with the rules for installation and operation, or any modification of the original material could deteriorate the battery charger, and therefore cancel the manufacturer's warranty.
- Beware: do not touch the remote ON/OFF control contact when the charger is powered up: dangerous voltage
- Beware : even if the remote ON/OFF control is on position OFF, the charger is still powered up.

CPS2 CHARGER TEMPERATURE PROBE

REFERENCE: STP-CPS2 (SEEL008725)

1) OVERVIEW

-STP-CPS2 probe compensates the charging voltage according to the battery local ambient temperature.

Charger type	Temperature compensation
12V charger	-18mV/°C
24V charger	-36mV/°C
48V charger	-72mv/°C



-This option is fitted with a probe, 5-metre cable with RJ9 4P4C connector, 2 collars and 2 self-adhesive bases.
-This document is intended for users, installers and equipment maintenance staff. Please read this document and CPS2 battery charger user manual carefully before working on the material.

2) USING

- Before any handling, the charger must be disconnected from AC power network and batteries.
 - **Connect the end of the probe with the RJ9 4P4C type connector on the K2 charger terminal.**
- Place the other end of the probe (captor) in the battery local; fix it on the battery cable with the supplied collar (fix the collar at 10cm from the end of the probe).
- Check if everything is well connected and connect the charger on the batteries and AC power network.

3) PRECAUTIONS

- The temperature probe has to be prevented from any mechanical deterioration and liquids.
- For the well functioning of the charger, please respect the proceedings above described.
- The probe is must be only used with CPS2 battery chargers .
- Any failure to comply with the rules for installation and operation, or any modification of the original probe could deteriorate the battery charger, and therefore cancel the manufacturer's warranty.